

Wallace 2024 Highlights

“Accessible health care is not just a matter of policy—it is a matter of justice. It is about creating a society where every individual...has the opportunity to lead a healthy and fulfilling life. Wallace has been at the forefront of this mission...”

--State Representative Ricki Ruiz, at Wallace’s 40th Birthday Celebration

On July 25, Wallace celebrated 40 years of service providing welcoming, high-quality and barrier-free health services. Your generous support has been a pivotal part of this journey.

We marked the occasion with a community “Birthday Party” at our Downtown Rockwood location. On a beautiful, temperate summer’s day, over 350 people of all ages gathered to enjoy multicultural food and music, party games, a new “Story of Wallace” video, birthday cupcakes and fellowship.

We were inspired by remarks from our Founder, Dr. James Reuler, our CEO Lisa Cline, Multnomah County Commissioner Lori Stegmann, and State Representative Ricki Ruiz. We reconnected with old friends and made new ones.



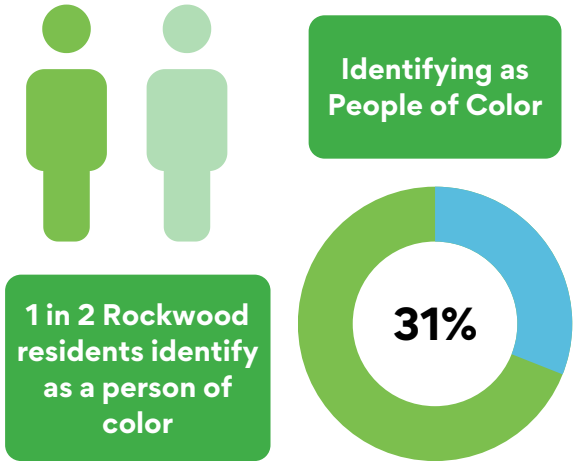
Destination Rockwood

The journey that began four decades ago in Old Town Portland led Wallace to Rockwood, where we’ve put down roots and built a truly comprehensive home for health to serve our neighbors. “I am particularly proud that Wallace is located in the great neighborhood of Rockwood,” said Representative Ruiz in his remarks on July 25. “This vibrant community embodies the diversity and resilience that make our state so special. Rockwood, with its rich cultural tapestry and strong sense of community, is the perfect home for an institution like Wallace that values inclusivity and compassion.”

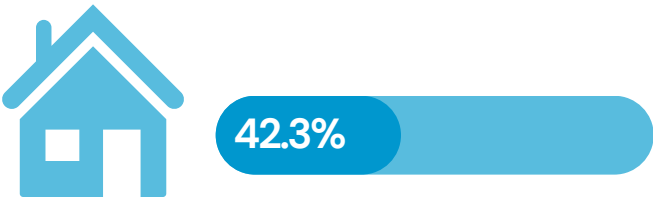
“I am particularly proud that Wallace is located in the great neighborhood of Rockwood,” said Representative Ruiz in his remarks on July 25. “This vibrant community embodies the diversity and resilience that make our state so special. Rockwood, with its rich cultural tapestry and strong sense of community, is the perfect home for an institution like Wallace that values inclusivity and compassion.”

Our Rockwood/East Multnomah County service area is characterized by cultural vibrancy, energy and optimism, as well as experiencing the impact of an array of social and health inequities:

- Multnomah County is the most diverse county in Oregon by total population, with 31% identifying as People of Color. Rockwood is home to much of this diversity—roughly 1 in 2 Rockwood residents identify as a person of color, which is more than twice the rate of West County residents and Oregon statewide.

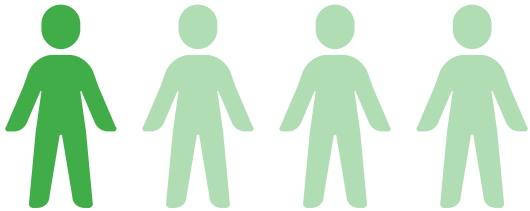


- In the last decade, communities of color have been growing faster in Rockwood compared to other areas in Multnomah County.



- The median household in Rockwood spends 42.3% of its income on rent/housing.

- 1 in 4 Rockwood residents are younger than age 17 (compared to 1 in 5 statewide).



30%

Less than median household



- The median household income in Rockwood is 30% less than the median household income in Oregon statewide.

Wallace served nearly 6,400 patients of all ages last year. An increase of almost 20% from the previous year:

- Dental services in particular had an increased demand.
- Nearly 20% of Wallace patients are under age 19 – a record!

patients under age 19



- Half of our patients are best served in a language other than English; Spanish is the primary language for 43% of our patients. Approximately 6% of our patients speak one of 52 other languages.



- 95% of Wallace patients have household incomes of 20% or less of the Federal Poverty Level.

95%



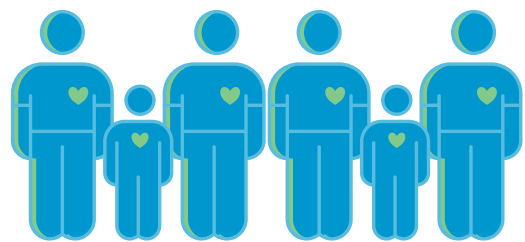
Progress Along the Road to Better Health

- We expanded medical and dental dual services, making it easier for adult and pediatric patients to take care of routine medical needs (such as vaccinations, diabetic checks or behavioral health support) during a dental visit.
- Our diabetic control outcomes continued to improve last year and were the best in Wallace's history.

- We proudly earned certification from the **Human Rights Campaign Healthcare Equality Index**, the nation's leading benchmark on inclusive care for LGBTQ+ patients. Wallace is the only community health center in the **Pacific Northwest** to receive this recognition.



- Our annual **Back-to-School Health Fair** in August offered approximately 500 community members of all ages free back-to-school and wellness supplies, connections to resources that support family well-being, fresh veggies, lunch—and an afternoon of fun.
- In partnership with **Casey Eye Institute's** mobile clinic, 52 uninsured Wallace patients received free eye exams and new glasses.
- Summer food programs such as **Farm-to-Table** delivered meals, a weekly farm stand, **Grab N Go** clinic refrigerator and produce vouchers at the weekly People's Market expanded access to fresh, local food for hundreds of patients.
- We hired our first Spanish-speaking behavioral health provider and welcomed a new African American medical provider.



Going to School

Throughout our history, Wallace has been ready to go where we're needed most. This year our journey took us to school!

Research confirms that student health centers play a key role in supporting school attendance, academic performance and reduction of health disparities. Until last year, the **Gresham Barlow School District** was the only school district in the metropolitan area without a student health center. That changed when Wallace’s mobile medical clinic began serving students at **Gresham High School** and **Sam Barlow High School** with medical and behavioral health care. Over 250 students visited the mobile clinic (which features a new graphics wrap designed by students) for routine care, vaccinations, and sports physicals during the year.



Meanwhile, the school district moved forward with the construction of a new student health center adjacent to the **Gresham High School** campus. Services in the new building were launched this October, with the expected addition of dental care this winter. Our mobile medical clinic continues to serve **Sam Barlow High School** four days each week. Students of all ages in the district are eligible to visit the student health centers.

Welcoming Others to the Journey

This year our organization numbered more than 100 employees, demonstrating the growth in the scope and reach of our programs. Our staff reflect the community we serve—more than fifty percent live as well as work in our service area. A grant from the **National Association of Health Centers** made it possible for us to award scholarships to support Wallace of staff of color who wish to pursue nursing education. We also participate in the National Institute for Medical Assistant Advancement’s program, to support staff wishing to pursue that certification.

At the national level, we journeyed to Washington, DC last summer with two of our consumer board members for the National **Association of Community Health Center (NACHC)** annual conference—and meetings with our Oregon legislators. We also were proud to host **Dr. Kyu Rhee, President of NACHC**, for a site visit at our clinic last spring.

Welcoming Others to the Journey

Wallace's commitment to delivering exceptional healthcare continues to support people in transforming their health, and ultimately, their overall well-being. Our goal is to remain worthy of these comments from **Representative Ruiz**:

“From providing high-quality medical services to advocating for health equity, Wallace has consistently demonstrated that healthcare is a fundamental human right. In an era where disparities in health access continue to pose challenges, Wallace's unwavering dedication stands as a testament to what can be achieved when we prioritize the well-being of our communities.”

Thank you for joining us on this journey!